

Address: NO.2-10, Jinlong Avenue South, Shahu Community Pingshan, Pingshan New District,
Shenzhen City, China.

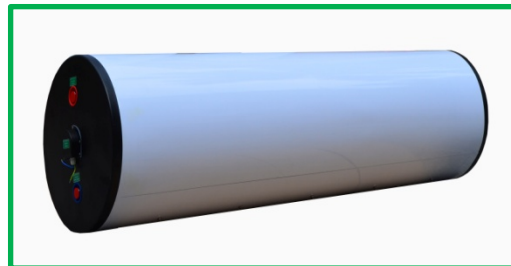
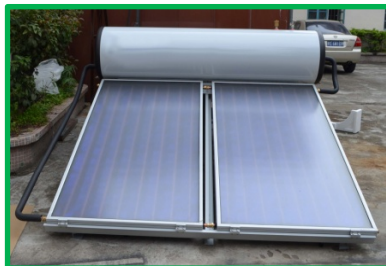
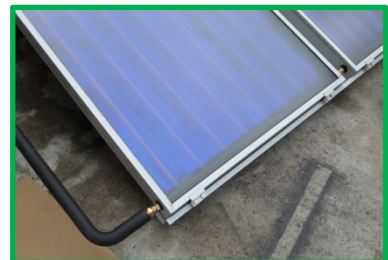
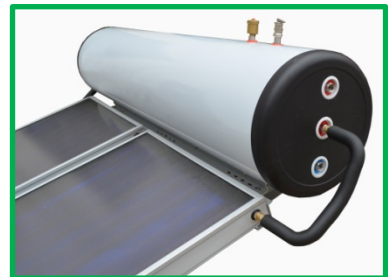
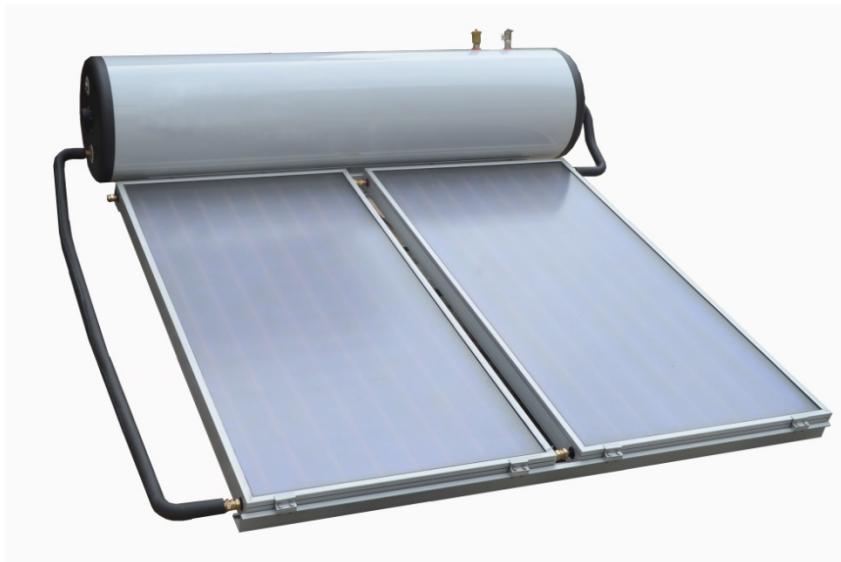
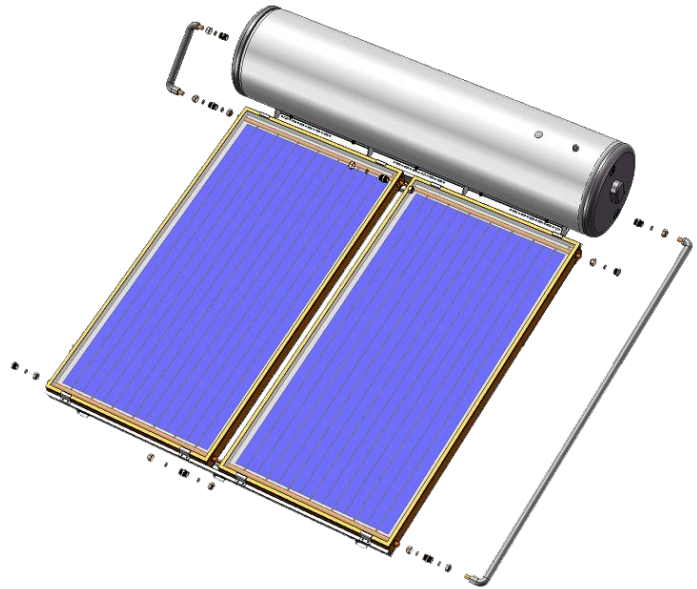
Tel: +86-769-21682567

Website: www.millionsun.com

E-mail: jacky@millionsun.com

Solar Flat Plate Thermosyphon Integrating System (A-TS)

Millionsun's solar flat plate thermosyphon integrating system is composed of solar flat plate collector, pressurized water tank, bracket, circulation pipe and accessories. Due to thermosyphon principle, the collector absorbs solar energy to heat the water inside, while the thermosyphon circulation inside enables the heated water to flow into and be stored in the water tank.



Address: NO.2-10, Jinlong Avenue South, Shahu Community Pingshan, Pingshan New District,
Shenzhen City, China.

Tel: +86-769-21682567

Website: www.millionsun.com

E-mail: jacky@millionsun.com

Features

- Stylish slimline design
- Thermosiphon operation minimises maintenance
- Electric booster models available
- Inner tank material: stainless steel 316
- Blue selective coating Absorber
- Details of the Product and quality is important for us
- Save 55% to 85% of your water heating energy consumption
- Reliable, low maintenance operation
- Flexible solution with options of collector and tank capacity
- Easy to mounting and installation
- Worklife over 15 years

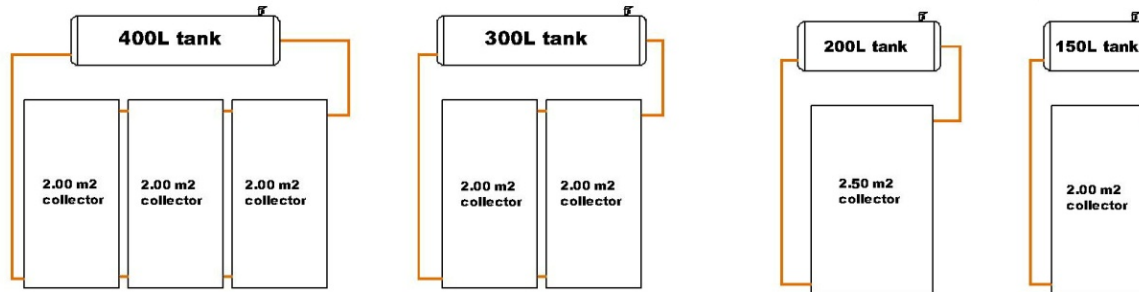


Address: NO.2-10, Jinlong Avenue South, Shahu Community Pingshan, Pingshan New District,
Shenzhen City, China.

Tel: +86-769-21682567

Website: www.millionsun.com

E-mail: jacky@millionsun.com



Type	A-TS150L/2	A-TS200L/2.5	A-TS300L/4	A-TS400L/6
Tank type	M-ST/150L-TAP	M-ST/200L-TAP	M-ST/300L-TAP	M-ST/400L-TAP
Tank volume	150L	200L	300L	400L
Collector type	M-SBC/2.0-blue	M-SBC/2.5-blue	M-SBC/2.0-blue	M-SBC/2.0-blue
Collector quantity	1	1	2	3
Collector Area	2.0m2	2.5m2	4.0m2	6.0m2
Suitable for roof	Flat or Slope	Flat or Slope	Flat or Slope	Flat or Slope
System weight	120 kg	150 kg	190 kg	240 kg
20GP/40HQ	39/80	32/66	24/52	21/46
Number of persons	3 - 4	4 - 6	6 - 8	8 - 12
Tank	Horizontal tank, tank volume from 150L to 400L, Tank Inner material: stainless steel 316(1.5mm), outside material: paint steel, 1500W/3000W/3600W electrical heater back-up			
Collector	Size: 2000X1000X80mm (2.0m2) or 2000X1250X80mm (2.5m2) Cover Material :Low iron patterned tempered glass, Thickness : 3.2mm Absorber Material: Blue Selective Coating with aluminium sheet Construction Type: Fin & Tube(laser Welding), full absorber Header tuber size: $\phi 22$ mm \times $\delta 0.6$ mm, Riser tuber size: $\phi 10$ mm \times $\delta 0.5$ mm Aluminium sheet back sheet, Glass wool insulation.			
Bracket	Material: aluminium alloy, installation angle from 15 degree to 60 degree			
Accessories	T.P valve, air valve , copper fitting, circulation pipe and insulation			

Warranty Details: 5 years warranty for system